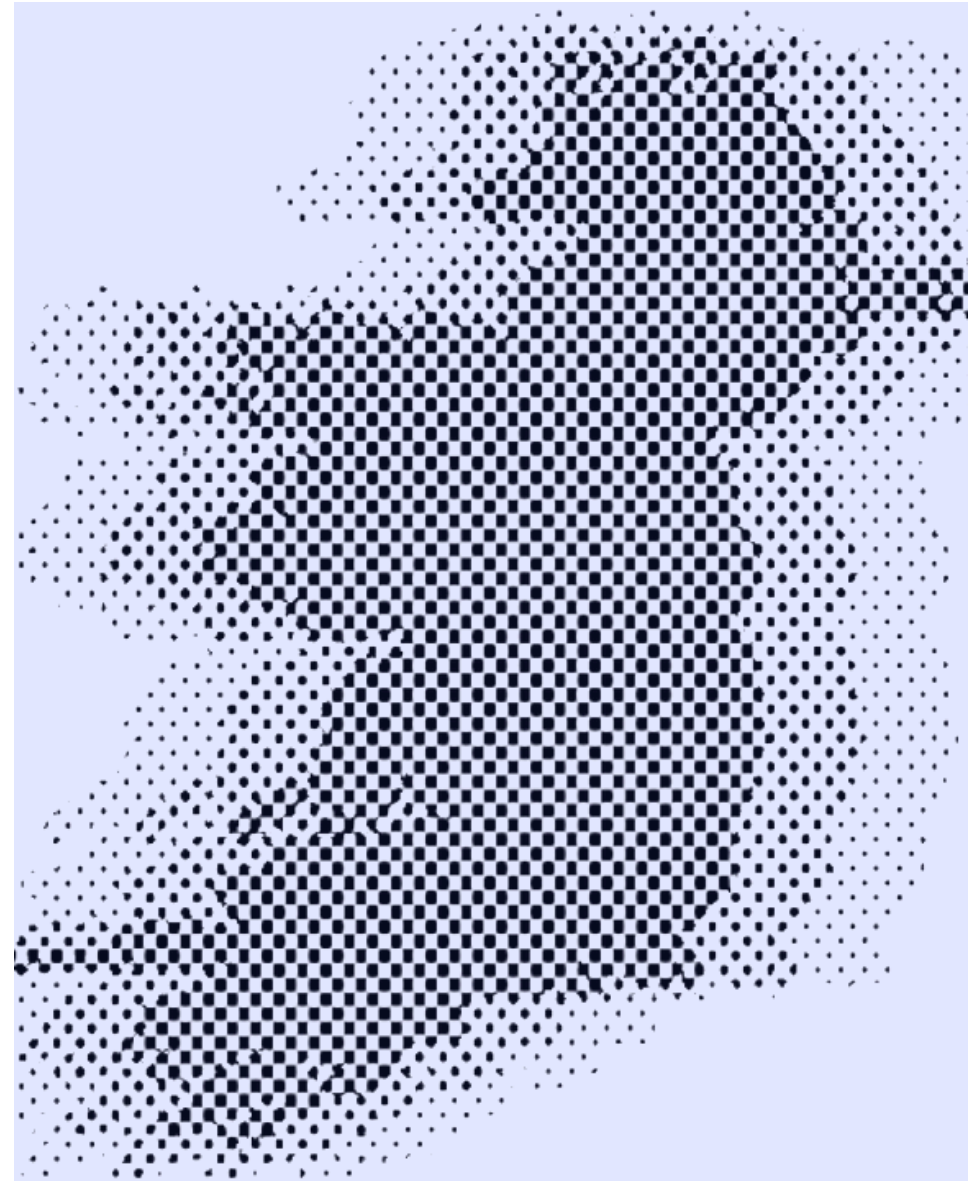


# Map of Remote 2022/23

January 2023

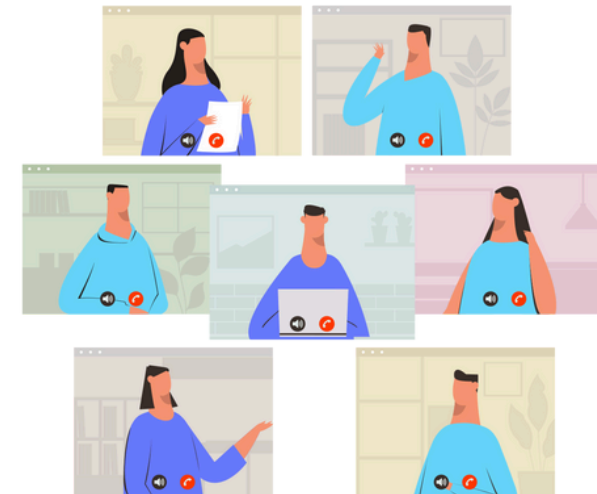
---

Insights from the world's first  
map of remote employment,  
with a spotlight on Ireland.



# Table of Contents

Introduction	Page 3	Cork Spotlight	Page 23
Executive Summary	Page 4	Dublin Spotlight	Page 24
Remote Employees	Page 5	Galway Spotlight	Page 25
Employers Top 15	Page 6	Donegal Spotlight	Page 26
Counties Top 15	Page 7	Mayo Spotlight	Page 27
Employment by Sector	Page 8	Community Needs	Page 28
Employment by Type	Page 9	Community Resources	Page 29
Employment by Location	Page 10	Methodology	Page 30
Employment Visibility	Page 11	Summary	Page 31
Employment Experience	Page 12		
Impact of Remote	Page 13 - 14		
Employee Spotlight	Page 16 - 17		
Employers Spotlight	Page 19 - 22		



# Introduction

## Welcome to the Map of Remote Report 2022/23

Grow Remote is a social enterprise on a mission to give people a greater choice of where they live, work, and participate.

To unlock this opportunity, we make remote employment more visible and accessible by empowering changemakers at all levels to drive systemic change and advocate for the transformative social impact of remote employment in local communities.

We built this map to understand where and how remote employment is having an impact at a local level: when decent employment is advertised without location, where do the jobs land? What sectors are they in, and in what roles? What are the benefits and challenges that remote workers face?

In order to build an ecosystem for this new kind of worker, we need to know where they are located, and what needs they have. How can we bring changemakers together and provide solutions for the challenges of remote work?

With over 1,000 remote workers mapped in Ireland and beyond in 2022, we already know that the Irish remote ecosystem in Ireland is home to a diverse and talented remote ready workforce and hundreds of remote employers.

So, let's have a look at what we have learned so far and explore the impact of remote employment in communities around Ireland.



Supported By:

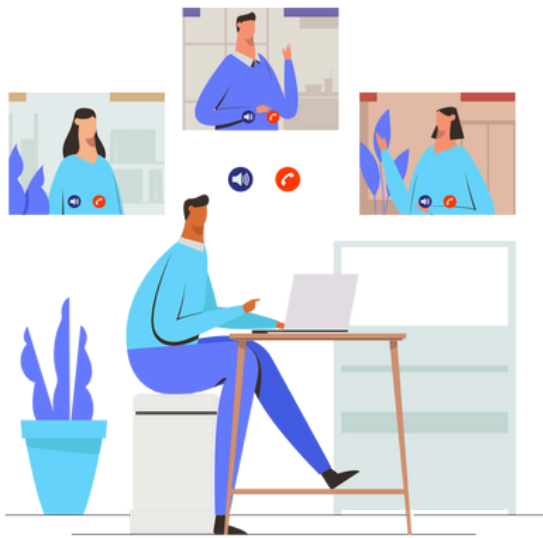


# Executive Summary

We know that remote work has the potential to transform and reinvigorate rural and regional communities by opening up access to jobs that can be done from anywhere.

While there is still plenty of work for us all to do, it is inspiring to learn from contributions to the map and survey that remote workers in Ireland:

- Spend more time and money locally
- Socialise with friends and family more
- Exercise more and spend time on wellbeing
- Participate more in their local communities
- Are building successful careers remotely



- In Ireland the Top 5 Counties for remote employment mapped to date are 1) Cork, 2) Dublin, 3) Galway, 4) Donegal, and 5) Mayo.
- There are +400 employers supporting remote employment and local communities in Ireland.
- Remote employment in Ireland is enabled by Irish success stories such as Glofox, Otonomee, NearForm, Teamwork, Axonista and HRLocker - not just global remote employers / multinationals.
- The IT sector represents 43% of remote workers mapped to date but within that we see a wide variety of job types supported in Customer Service, Product, Marketing, Software Development, Sales, Finance and Legal departments.
- 75% of remote workers mapped to date work exclusively from home.
- +90% of contributors have more time for their personal wellbeing and participating locally.
- The top 3 needs of the remote worker community and eco system in Ireland are 1) Connection, 2) Career Resources and 3) Employer Resources.

# Remote Employees

At the heart of the Grow Remote community are the hardworking, talented, and generous individuals who are driving social, economic and environmental change at a local level around Ireland.

Every purple dot on the map represents a remote employee.

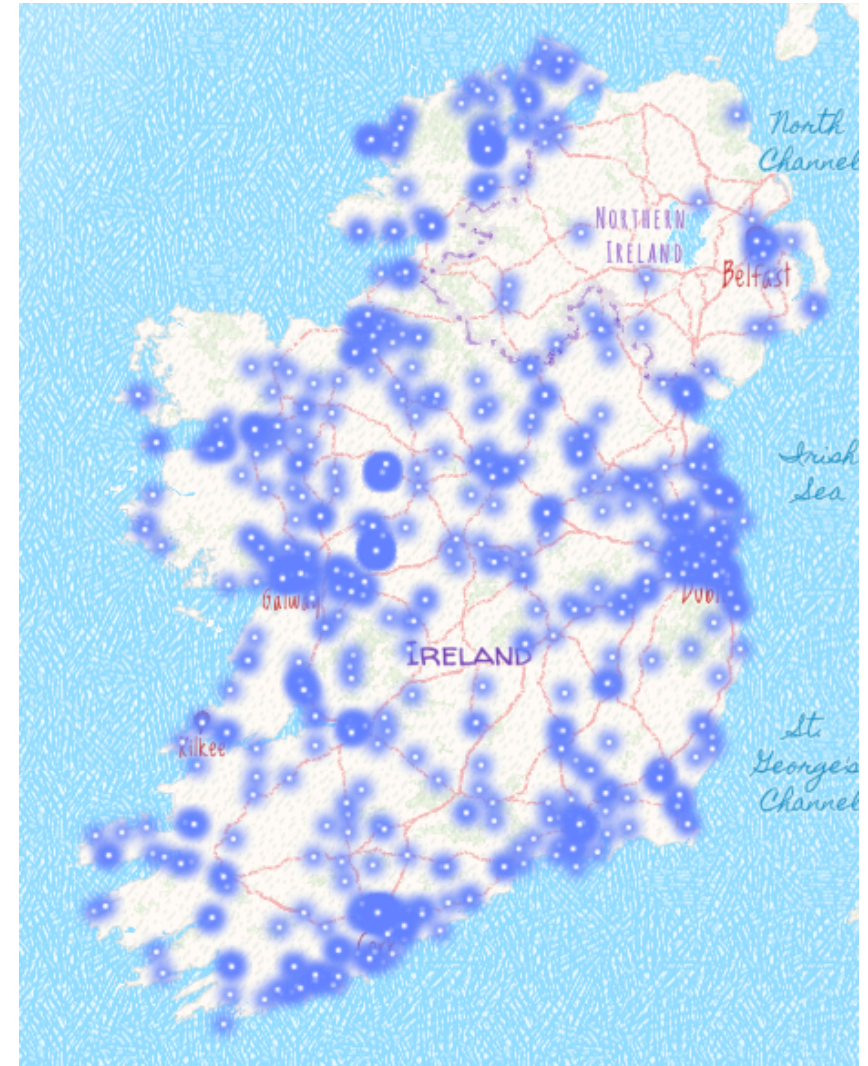
Behind each of these purple dots, there is a person with a family, a community, and a job. Through remote employment, they have greater choice of where to live, work, and participate.

Each contribution to the map is also from a remote advocate and a changemaker who is helping us make remote employment more visible and accessible to others.

New figures from the [Central Statistics Office](#) Labour Force Survey show that people who usually worked from home accounted for 22.5% of people in employment in the third quarter of 2022.

That represents over 500 thousand people in Ireland & we invite them all to contribute to the map [here](#) and get involved with our community to drive positive [change](#) at a local level.

Together we are making remote employment local.



Map of Remote visualising remote employment in Ireland

# Remote Employers: Top 15 - Ireland

While every purple dot on the map represents a remote employee, it also represents a remote employer. By providing an individual a greater choice of where they live, work and participate, they are building the future of work.

These remote employers are indirectly contributing to hundreds of local communities in rural and regional Ireland. They should be proud of the local Corporate Social Responsibility impact, their culture, and the operational benefits achieved.

*"We know that for every three new jobs that arrive in a community, another two jobs are sustained locally.*

*Shops, cafes and local businesses will thrive."*

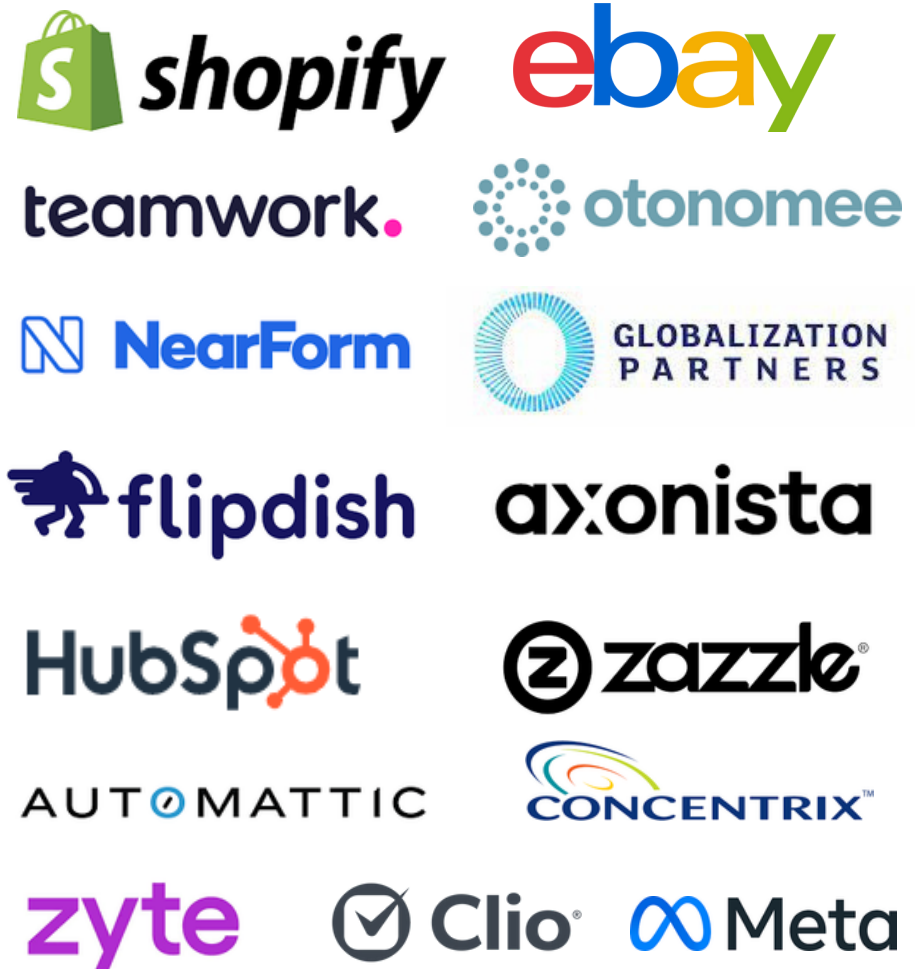
- John Evoy, General Manager at Grow Remote

It is inspiring to see the geographical spread, various sectors, and different sizes of remote employers across Ireland.

We know from the Map of Remote that there are:

- More than 400 employers supporting remote work
- Global, national and local remote employers
- Irish home-grown businesses employing remotely globally

## Top 15 Remote Employers in Ireland



# Remote Counties - Top 5 Ireland

## Top 5 Counties in Ireland

(as per # of remote workers mapped to date)

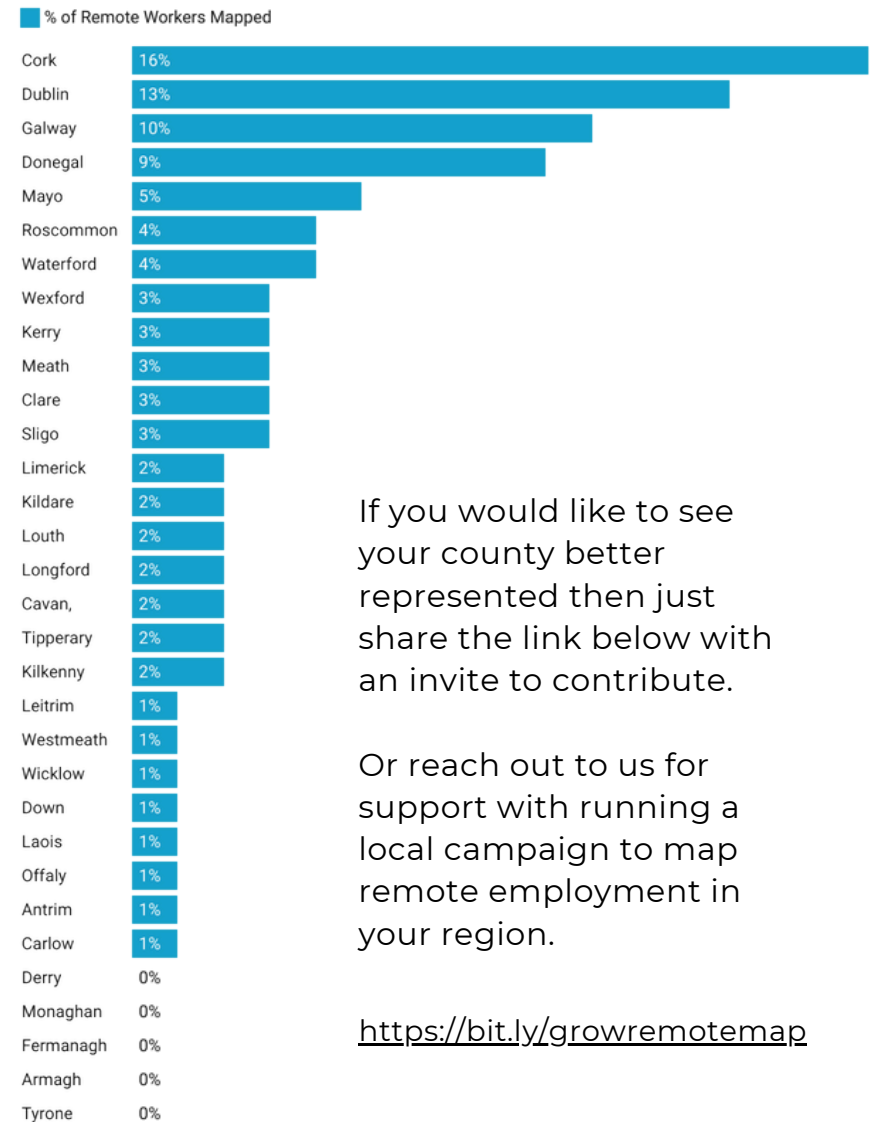
- 1: Cork
- 2: Dublin
- 3: Galway
- 4: Donegal
- 5: Mayo



We celebrate and applaud all of the local communities in these top 5 counties in Ireland, all providing a home for a talented remote workforce.

There has been tremendous amount of work done in these regions to create a place where remote workers can thrive. It takes a strong infrastructure and community to create a place that attracts and provides for remote employees

From investment in local community development initiatives and projects, to the evolution of the digital infrastructure, each county has its own draw and reasons why remote workers are proud to call it their home.



If you would like to see your county better represented then just share the link below with an invite to contribute.

Or reach out to us for support with running a local campaign to map remote employment in your region.

<https://bit.ly/growremotemap>

# Remote Employment by Sector



Created with Datawrapper



The IT sector is a clear leader when it comes to remote employment and usually refers to businesses and organisations that are involved in the design, development, and maintenance of computer systems, software, and networks.

In terms of jobs within the sector it is important to highlight that as well as software development, the IT sector supports a wide spectrum of job types such as:

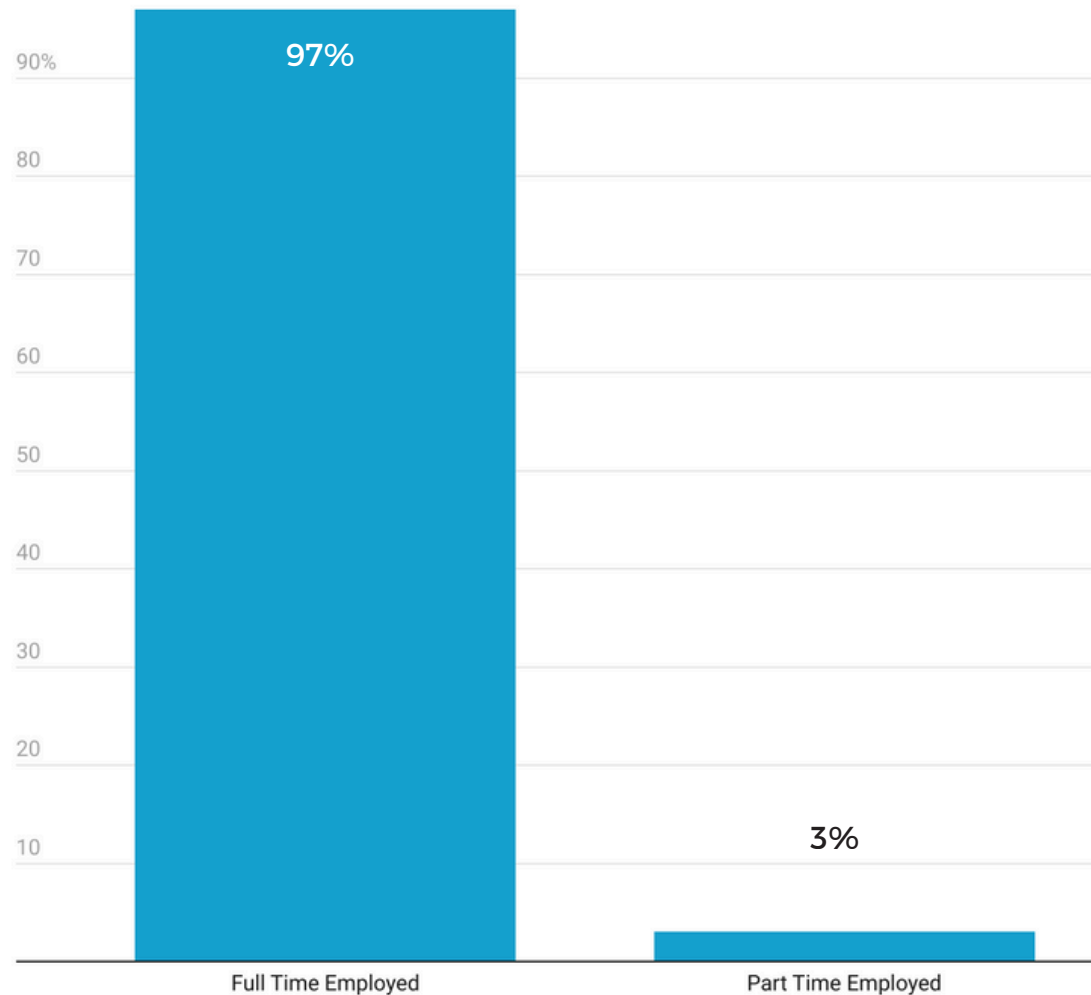
- Customer Support / Customer Success
- Product Management
- Marketing / PR
- Business Development / Sales
- Finance
- Legal

While the IT sector may be the main provider of remote employment, our message here is that remote work is not just for tech people.

If your team needs support with going or thriving remotely, check out our Employer Resources [here](#) and contact our Employers Lead - Joanne Mangan.

# Remote Employment by Type

Q: Are you employed remotely full-time or part-time?



When it comes to remote employment, the community is almost exclusively full-time with 97% of remote workers mapped to date in full-time employment. Demand is most certainly higher than the supply of part-time remote work but it is out there, as one of our community members, Denise Kelly, recently discovered, having secured a remote part-time role though a connection in our online community space, Grow Remote Online.

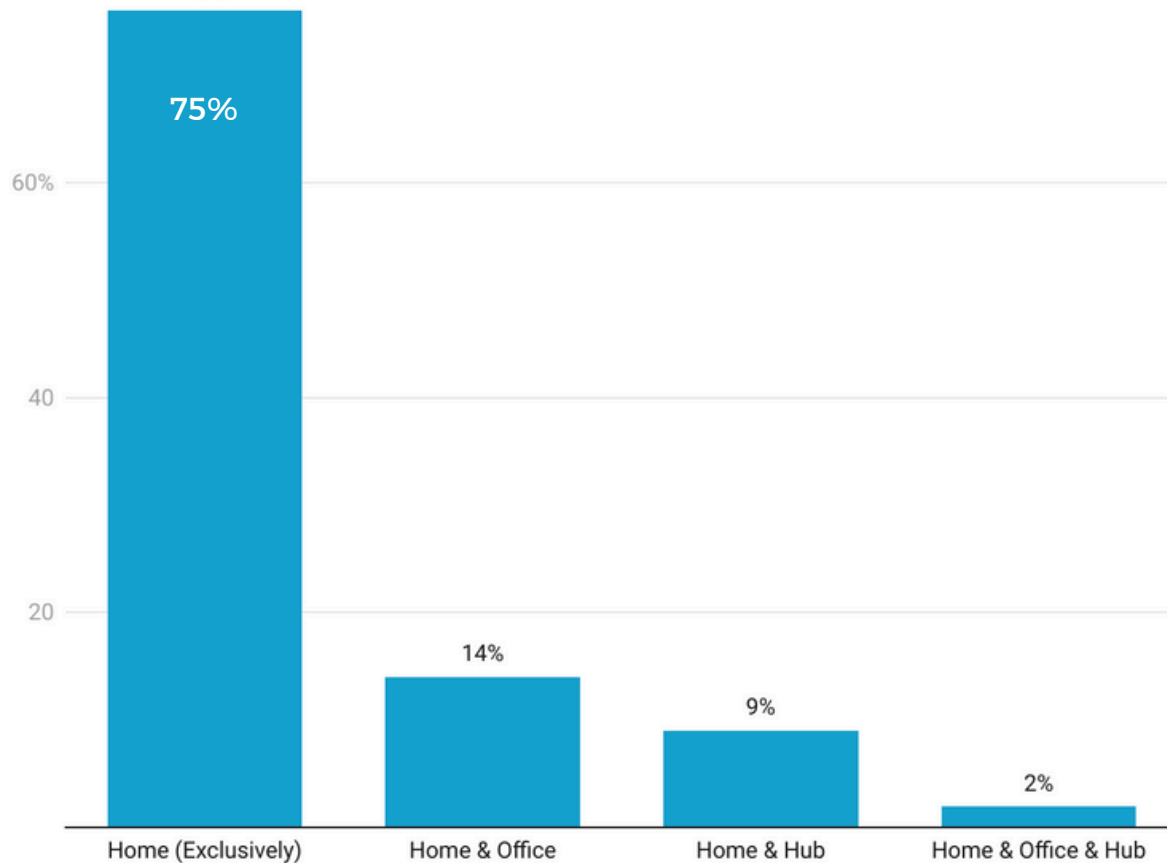
As an organisation, we focus our efforts on helping people secure remote employment though full-time or part-time work, rather than freelance work. This gives people a greater choice in where they live, work and participate. Remote employers often offer benefits such as:

- Maternity / paternity leave
- Paid Time off
- Sick pay
- Pension
- Employment contract

These all contribute to the positive social and economic impact that remote employment can bring to local communities across Ireland.

# Remote Employment by Location

Q: Where do you normally work from?



Created with Datawrapper

connectedhubs

Work is something we do, not a place we go.

Within our community of remote workers mapped to date, 75% of them work exclusively from home.

With nearly 15% of remote workers still going into the office at some stage, it is important that employers are intentional about taking on the challenges that a hybrid workplace can create.

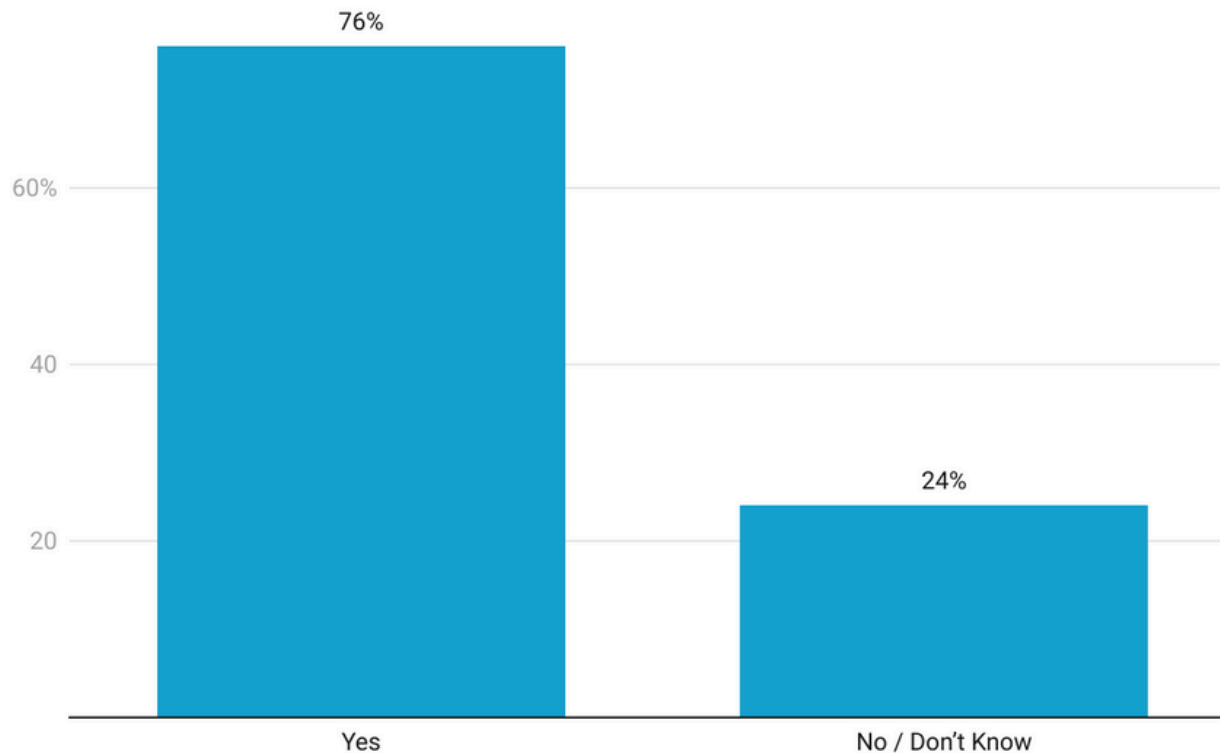
There are also 11% of remote workers who have discovered the social and professional benefits of working from one of Ireland's +250 digital hubs.

Coworking spaces can be more socially fulfilling than home and office-based work locations as well as providing a professional work environment for remote workers.

As per the latest CSO data: "On average, households in the State are situated 5.6km from a remote work hub". To change up your working environment & connect with other remote workers locally visit Connected Hubs to explore the national hubs network in Ireland.

# Remote Employment - Visibility

Q: Does your employer advertise remote jobs?



Created with Datawrapper

Question removed from survey in Oct '22. Data representative of 90% of contributions

The Grow Remote mission is to make remote employment more visible and accessible.

A key enabler of remote employment being visible in local communities is when employers advertise the roles they have without location.

By doing so, they challenge the notion of remote work being a 'privileged' benefit, while also establishing a clear company culture for existing and future team members.

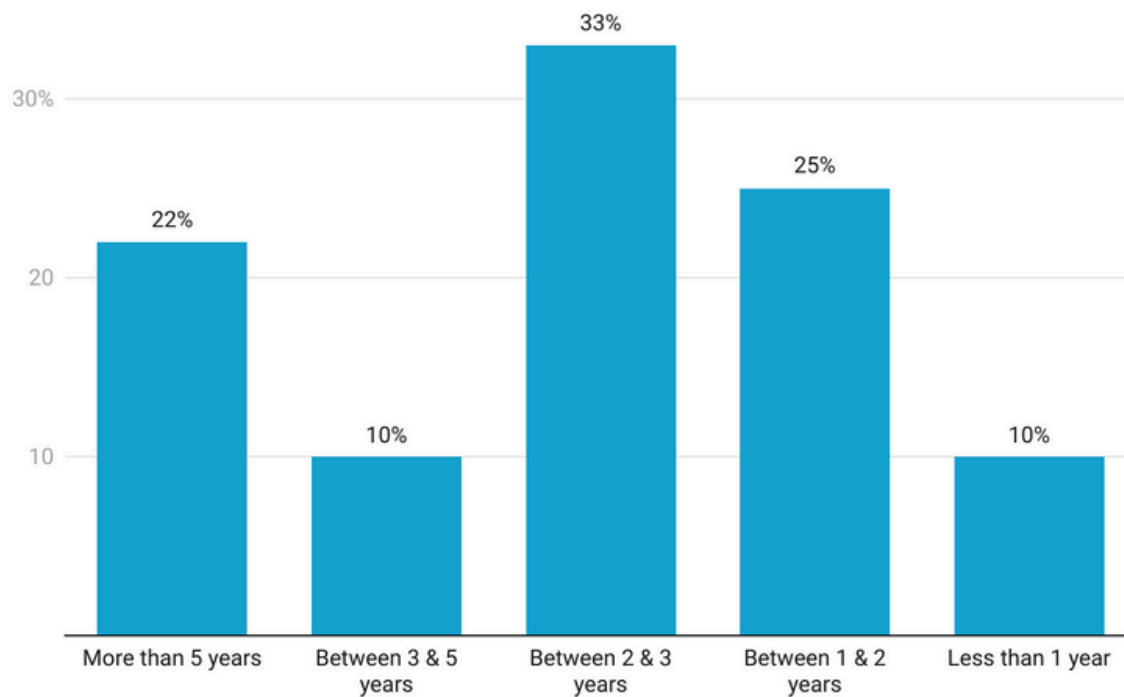
With up to 24% of employers not yet advertising remote employment, there is plenty of work to do and opportunities to make remote employment more visible.

The [Grow Remote Jobs Board](#) is a great place to advertise your open remote roles and connect with the community of remote work ready talent.

You can also reach out to our Recruitment Manager [Aisling Tighe](#) - Ireland's first and only recruiter dedicated to remote employment!

# Remote Employment - Experience

Q: How long have you been working remotely for?



Created with Datawrapper

If your team needs support with the skills required to thrive remotely or lead remote teams, check out our fully funded training programmes available nationwide here: <https://bit.ly/growremotetraining>.

We have many people within our community who have been working remotely since before remote was a mainstream concept!

Did you know that the origins of remote work are said to go back as far as 1973, when Jack Nilles, a NASA engineer, coined the term "teleworking" as a solution to stop the commute and save against rising fuel costs?

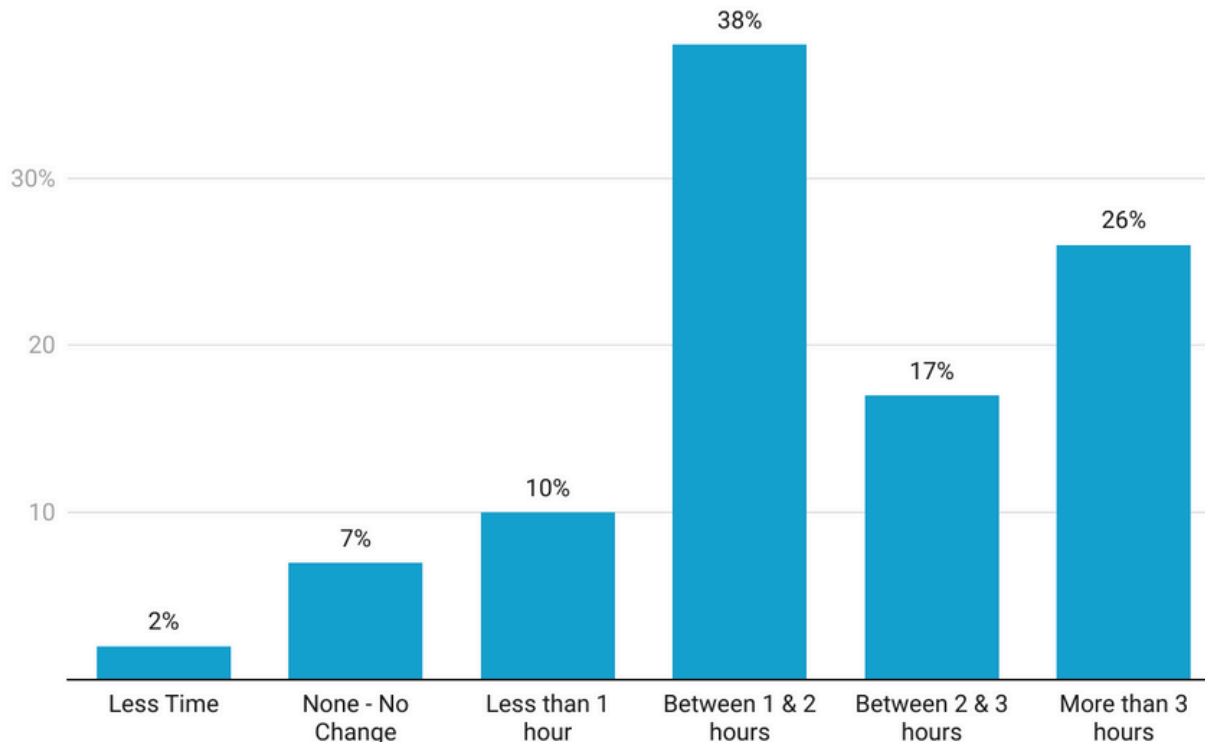
The data from the "Map of Remote" supports the word on the street within our community, as we can see that a third of contributors are individuals who have worked remotely for more than 3 years, while 22% of contributors have worked remotely for more than 5 years.

The global pandemic has significantly accelerated the transition to remote for many employers, but it is important to remind ourselves that many companies continue to define their actual remote work policies.

If an organisation does not support remote work, they will be putting themselves in a competitive disadvantage on multiple levels.

# Remote Employment - Impact

**Q: As a remote worker how much more / less time do you dedicate to your personal wellbeing or participating locally per week?**



Created with Datawrapper

New Question introduced to survey in Oct '22.

We know that the local community impact of remote employment spreads across social, economic, and environmental areas.

When people have a greater choice of where they live, work, and participate, a key opportunity is that they have more time for themselves and for participating locally.

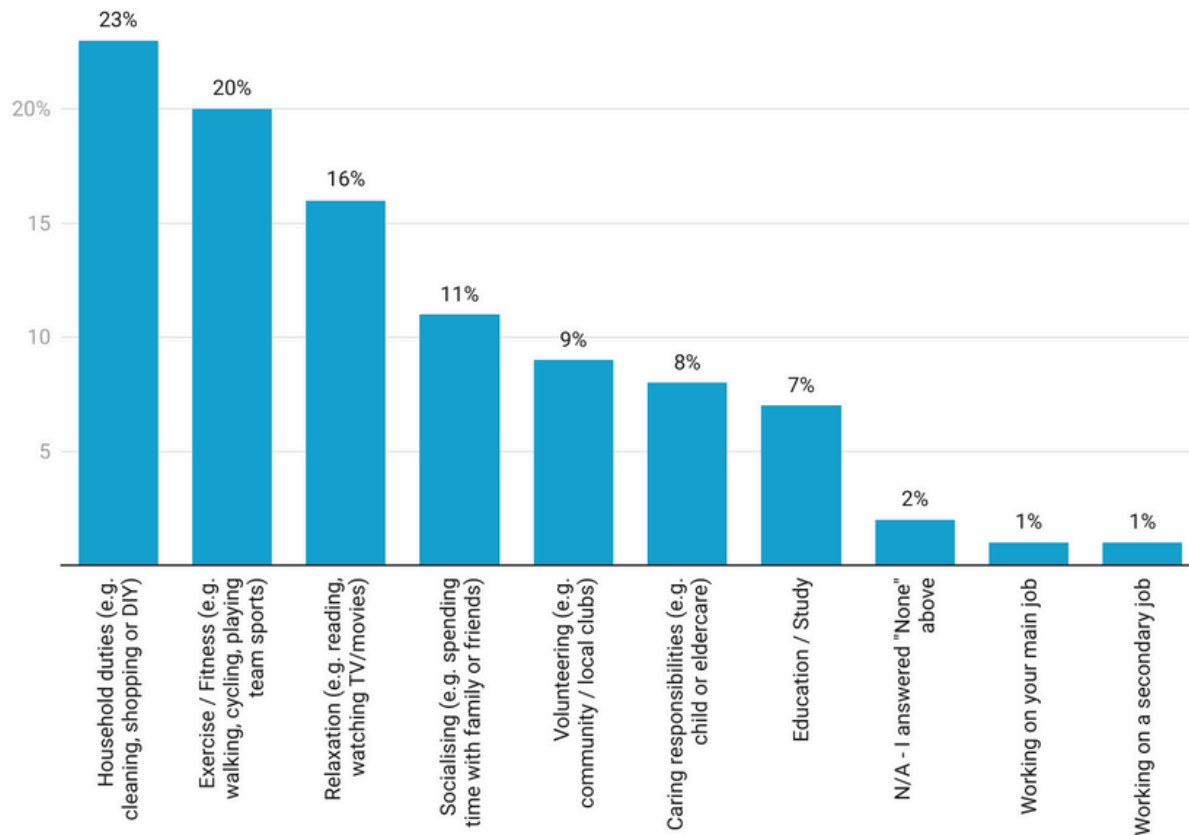
No longer having a commute and perhaps also greater flexibility in when work is done, remote employment is a game changer for many.

With over 25% of remote workers being able to dedicate more time to themselves and their local community, people across Ireland are healthier and more engaged with their local communities.

Thanks to remote work, more than 80% of remote workers can dedicate more than 1 extra hour per week to their personal wellbeing or participating locally and that is driving positive social impact.

# Remote Employment - Impact

Q: Where / how do you spend this extra time locally?



Created with Datawrapper

New Question introduced to survey in Oct '22. .

When we asked people what they do with the extra time they have for themselves and the community the feedback was inspiring.

20% of people use the time for exercise or fitness: walking, cycling, or getting involved with team sports at a local level.

9% of people use this time for volunteering within their local communities, and 8% use this time for caring responsibilities.

Remote workers can give more time to themselves, their homes, family, friends, and their communities.

We also asked " If "Volunteering" was selected, with who do you volunteer?



# Spotlight on Remote **EMPLOYEES**



# Remote Employee - Spotlight



"The rise of remote work has allowed me to transition from local jobs in the food/retail sector to data research, which is so much more suitable for me that I still can't believe it. I could use my multilingual skills to land an entry-level job in data analytics. Most language jobs used be located in Dublin, Galway and Cork, and therefore I was losing out on my competitive edge."

- [Indra Cawley, Mullingar, Co. Westmeath](#)



"Remote work allowed me to relocate from the Dublin area to Enniscorthy in Wexford and improve my quality of life overall: I can work from home, have more time flexibility, and the absence of commuting gave me that extra time to spend with the family, my hobbies, and within my local community participating to events, volunteering, and supporting local activities."

- [Salvatore, Enniscorthy, Co. Wexford](#)



"7 years ago, I arrived from Brazil to study English in Dublin. I learned the language, had the opportunity to work and live in Dublin, Galway and Limerick until settling in lovely Leitrim, which is only possible due to my work-from-home employment. I've been working remotely for over 5 years and that changed my lifestyle for the better. During those years, we moved around based on my partner's needs to be in the office, but the company changed the conditions of his contract after the pandemic, which allowed us to move to a bigger house in a small village in the northwest."

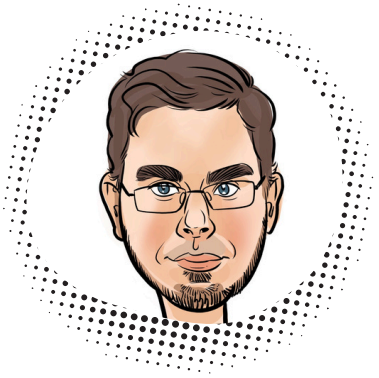
- [Lorena Sousa - Dromahair, County Leitrim](#)

# Remote Employee - Spotlight



"We moved back to Glin (where I grew up) 8 years ago with our two sons for a different life to that we were living in urbana. When I told my employer about our plans to relocate, their response was, 'You have a laptop, off you go', and that's when I became a remote worker! Since then, it's been the best of both worlds for me: I have more time without commuting; I get my work done without distractions; and when I want or need to, I visit the office and get the social aspect of in-office working then."

- [Anna Hutchinson, Glin, Co. Limerick](#)



Being a remote worker has enabled me to build my career while living in multiple countries across the world while maintaining my positions. Having moved back to Ireland in 2020, my remote role has allowed me to choose to live in beautiful Wexford which brings along with it a lower cost of living and higher quality of life. I am passionate about increasing the visibility and awareness of remote roles in Ireland and encouraging more folks to take advantage of the remote work market, in particular the ability for remote work to revitalise rural communities across Ireland.

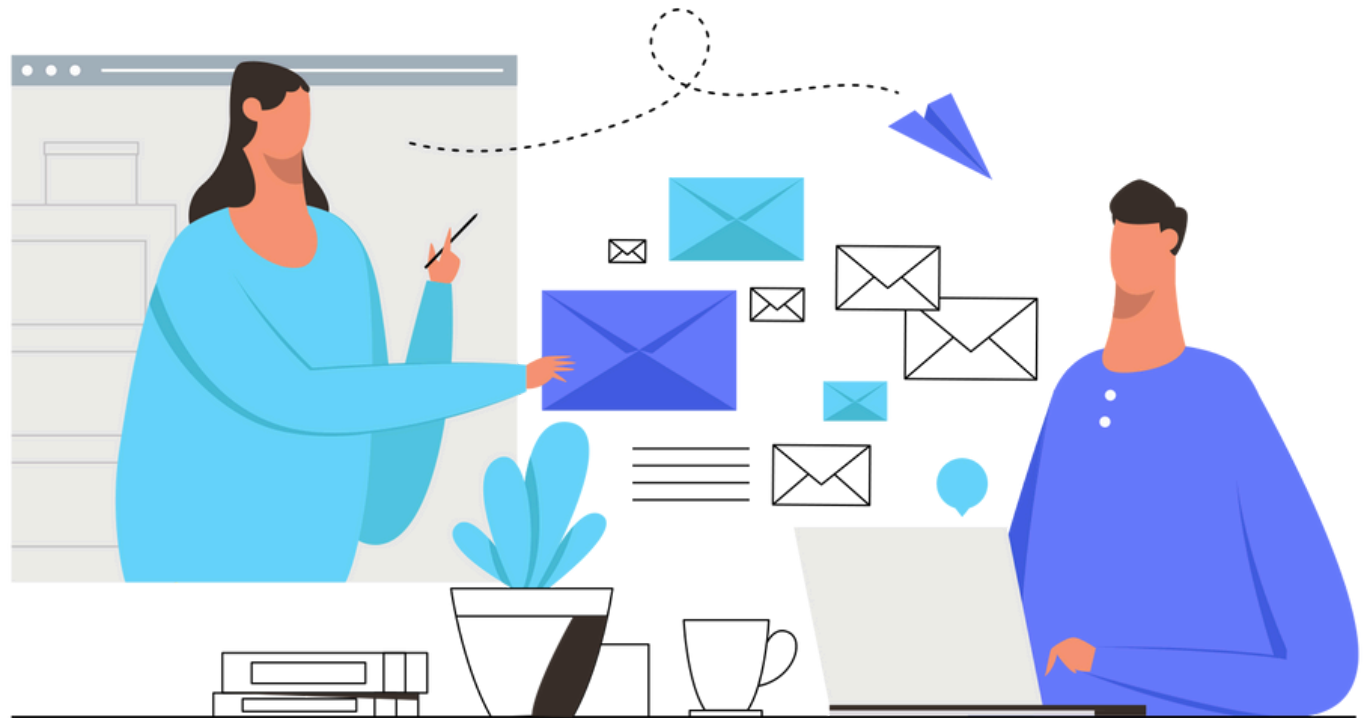
- [James Gannon - Wexford, Co. Wexford](#)



Remote work has allowed me to build a life in my hometown, close to family and friends. I have 2 young children and I feel I haven't missed out on as much of their early years as I may have if in an office. I can work flexibly when it suits my family and my energy and this suits me a lot. This year I hope to get more involved in local activities, and look forward to the opening of Comworks, Loughrea's new Remote working hub.

- [Helena Conlon, Loughrea, Co. Galway](#)

# Spotlight on Remote **EMPLOYERS**



# Remote Employers - Spotlight



The above remote employers have all supported remote employment (fully remote or hybrid) in Ireland during 2022.

If you need support with the to transition your team to remote , check out our employer resources here: <https://bit.ly/gremployerresources> & contact our Employers Lead - Joanne Mangan.

If you have already made the transition to remote employment and would like to get your remote team mapped and featured in the next report, drop us an email to [community@growremote.ie](mailto:community@growremote.ie)

# Remote Employers - Spotlight



**#1 Remote  
Employer in  
Ireland  
2022**

Shopify is a leading global commerce company, providing trusted tools to start, grow, market, and manage a retail business of any size. Shopify powers millions of businesses in more than 175 countries.

Shopify Ireland were pioneers of remote within the Shopify group and the foundations they laid were a significant influence on the groups global transition to a the remote first company that they are today.

We are proud that Shopify are Employer Partner of Grow Remote and grateful for their contribution to both the remote eco system in Ireland and our community.

Find out more about working at Shopify & their open positions here:  
<https://www.shopify.com/careers>



**#2 Remote  
Employer in  
Ireland  
2022**

eBay Inc. is a global commerce leader that connects millions of buyers and sellers in more than 190 markets around the world. Their services enable economic opportunity for individuals, entrepreneurs, businesses, and organizations of all sizes.

eBay in Ireland were another pioneer of remote within the group and as Siobhan Curtin, eBay Site leader Ireland, notes:

*'We are proud that eBay are founding members of the Remote Alliance and are now leading by example as they hire without location across the business and clearly define their flexible working policy.'*

Find out more about working at eBay and their open positions here:  
<https://careers.ebayinc.com/>

# Remote Employers - Spotlight



**A Top 10  
Remote  
Employer in  
Ireland  
2022**

Otonomee is an Irish success story and a purpose-built, remote-first outsourcing business that has recently secured €1.5 million in growth capital. Find out more about their journey, and culture commitment to a remote first model [here](#).

Otonomee helps companies manage and grow their customer support and sales operations as they scale internationally, by providing outsourced people and technology solutions. Otonomee is leveraging the benefits of a successful remote first model for its clients. The business has grown quickly, now employing 90 people and supports customers in Ireland, North America, Britain, Spain, Germany, and Italy.

Find out more about working at Otonomee and their open positions here: <https://otonomee.jobs.personio.com/>



**A Top 10  
Remote  
Employer in  
Ireland  
2022**

NearForm is an IT Services and IT Consultant business that offers a new kind of partnership with their clients by combining the development of both products and skills to accelerate digital delivery. They provide clients with not only game-changing digital products but also with the processes and skills needed to maintain the efficiencies brought on by digitalization.

They are a rapidly growing team of over 200, dispersed across 29 countries.

NearForm have been a pioneering remote-first company for the past 10 years, and we are proud that they are an Employer Partner of Grow Remote and contributor to our community and eco system.

Find out more about working at NearForm and their open positions here: <https://www.nearform.com/careers/>

# Spotlight on Remote **COUNTIES IRELAND**



# Remote Counties - Cork (#1)

## Cork Overview

With 16% of Ireland's remote workers mapped to date, and the local Grow Remote chapters hosting monthly local events across the county, Cork is home to the largest and most active remote worker community in Ireland as well as some inspiring homegrown remote first companies.

## Local Chapters

- Grow Remote - Skibbereen
- Grow Remote - Bantry
- Grow Remote - Cork City
- Grow Remote - Dunmanway



## Employers Hiring Remotely in Cork



## Community Events in Cork

**WORK HARD** (Remotely)  
**DISCONNECT** (Locally)

Get your weekend off to a cracker with a drink on us!

FRANCISCAN WELL  
Cork City (7pm - 8pm)  
Last Friday of every month

**GROW REMOTE WEST CORK**  
Local Meetup - Swimming

Weekly, Fridays, 12pm (sharp)  
Lough Hyne, Skibbereen

Gavin Jeffery  
Local Volunteer & Leader

All welcome!  
[growremote.ie/events](https://growremote.ie/events)

grow remote **WEST CORK**

REMOTE WORKER MEET-UP

FASTNET MARITIME & FOLK FESTIVAL

Sunday 19th June 2022  
6:30pm - 8:30pm

Levis Corner House, Ballydehob

LOCAL EVENT

[growremote.ie/events](https://growremote.ie/events)

# Remote Counties - Dublin (#2)

## Dublin Overview

Dublin City hosted a headline community event in 2022 and proved itself as home to a thriving and active community of remote workers and leading remote employers. With 13% of Ireland's remote workers mapped to date, a good network of digital hubs and local chapters, Dublin shows that the remote worker community is thriving in urban locations also.

## Local Chapters

- Grow Remote - Dublin City
- Grow Remote - Malahide
- Grow Remote - Skerries
- Grow Remote - Balbriggan



## Employers Hiring Remotely in Dublin



## Community Events in Dublin

**LET'S CONNECT!**  
**Remote Worker Meet-Up**  
28th April 2022 | 7pm - 8pm  
The Hole in the Wall pub  
345-347 Blackhorse Ave., Dublin 8

LOCAL EVENT

**DUBLIN CHAPTER**

[growremote.ie/events](https://growremote.ie/events)

**grow remote SKERRIES**  
**Pop-Up Work Space**  
(Upstairs in Joe May's, 23 Harbour Road, Skerries)  
Join us for lunch, share a coffee, finish off some work and grab a post-work pint

**Tuesday 5th April**  
**Tuesday 19th April**  
1pm - 6pm

[www.growremote.ie/events](https://www.growremote.ie/events)  
[/growremotenorthdublin](https://www.facebook.com/growremotenorthdublin)

**NORTH DUBLIN**

**DUBLIN MEET-UP FOR REMOTE WORKERS**  
Thursday 20th October 2022  
6:30pm - 8pm

tcube coworking  
1, O'Connell Street Lower  
Dublin, D01 TX31

grow remote

All welcome!  
[growremote.ie/events](https://growremote.ie/events)

# Remote Counties - Galway (#3)

## Galway Overview

The Grow Remote Local chapters in Galway play a key role in driving change across the county and supporting the local community of remote workers. With 10% of Ireland's remote workers mapped to date, Galway is home to a growing number of remote employees and leading remote employers represented in the West of Ireland.

## Local Chapters

- Grow Remote - Galway City
- Grow Remote - Loughrea
- Grow Remote - Gort
- Grow Remote - Mountbellew



## Employers Hiring Remotely in Galway



## Community Events in Galway

**REMOTE WORKER SOCIAL MEET-UP**

8th June 2022 - 19:00

@ **McNamee's**

LOCAL EVENT

**LOUGHREA**

McNamee's Bar Loughrea,

[growremote.ie/events](https://growremote.ie/events)

**WORK HARD DISCONNECT** (Remotely) (Locally)

Get your weekend off to a cracker with a drink on us!

O'CONNELLS BAR  
Galway City (7pm - 8pm)

**CURIOS ABOUT REMOTE WORK**  
in North East Galway?

Saturday, 19th Nov, 10am - 12pm  
ATU Mountbellew, Galway

- Intro to Remote & Opportunities
- Career Resources, Workshops
- Community Lunch, Free (12pm)

All *Welcomes*

Please register here: [growremote.ie/events](https://growremote.ie/events)

# Remote Counties - Donegal (#4)

## Donegal Overview

Thanks to Ireland's first county-wide remote work strategy, and a network of 14 digital hubs as well as 2 of our founding local chapters, Donegal's remote community is active and well supported. With 9% of Ireland's remote workers mapped, to date and a wide variety of local and global remote employers present - Donegal has it all!

## Local Chapters

- Grow Remote - Donegal
- Grow Remote - Arranmore
- Grow Remote - Carrigart



## Employers Hiring Remotely in Donegal



## Community Events in Donegal

**grow remote DONEGAL** LOCAL EVENT

**Local Meet-Up**  
Beach Walk, Talk & Clean



**Saturday 2nd April**  
**14:00 - 15:00**  
Bundoran, Tullan Strand  
Meet in Car Park

@CrowDonegal  
[www.growremote.ie/events](http://www.growremote.ie/events)

**grow remote DONEGAL** LOCAL EVENT

**SUPPORTING CULTURE NIGHT IN CARRIGART - DONEGAL**

PART OF A NATIONWIDE PROGRAMME OF EVENTS LED BY REMOTE WORKERS

**FRIDAY 23 SEPTEMBER**



LOCAL EVENT

[growremote.ie/events](http://growremote.ie/events)

**grow remote DONEGAL** LOCAL EVENT

**Local Meet-Up**  
CoWorking Day & Social Lunch



**Wednesday 23rd March**  
@ TheBASE Enterprise Centre  
CoWorking Space

Railway Rd, Stranorlar, F93 A0E4

@CrowDonegal  
[www.growremote.ie/events](http://www.growremote.ie/events)

# Remote Counties - Mayo (#5)

## Mayo Overview

Home to a growing remote worker community and one of our founding local chapters. Castlebar town has even recently come out on top as the best place to work from home in Ireland, new [research](#) from Switcher.ie has found. Mayo has 5% of Ireland's remote workers mapped to date.

## Local Chapters

- Grow Remote - Westport
- Grow Remote - Castlebar
- Grow Remote - Ballina



## Community Events in Mayo

## Employers Hiring Remotely in Mayo



**grow remote WESTPORT**  
**REMOTE WORKER SOCIAL MEETUP**  
UPDATE New Location  
9th May 2022  
6.30pm - 7.30pm  
Matt Molloy's Westport, Mayo  
ALL WELCOME  
LOCAL EVENT  
[growremote.ie/events](http://growremote.ie/events)

**grow remote WESTPORT**  
SUPPORTING CULTURE NIGHT IN YOUR LOCAL COMMUNITY  
PART OF A NATIONWIDE PROGRAMME OF EVENTS LED BY REMOTE WORKERS  
FRIDAY 23 SEPTEMBER  
LOCAL EVENT  
[growremote.ie/events](http://growremote.ie/events)

**REMOTE WORKER ADVENTURE SOCIALS**  
Join the remote worker community for some local outdoor fun & activity  
**Hiking Croagh Patrick**  
October 29th  
@MURRISK, MAYO  
LOCAL EVENT  
[growremote.ie/events](http://growremote.ie/events)

# Remote Employment - Community

As we work towards our mission of making remote employment more visible and accessible, we will always be led by the needs of our community and empower changemakers to drive positive change at a local level.

Within the Map of Remote survey, we asked our community of contributors how we can best support them.

The Top 3 needs identified were:

1: **Connection** - with other remote workers at a local level and access to an online global community.

2: **Resources** - for individuals that would help them start or take the next step in their careers, and for employers that would help them transition, grow, and thrive remotely.

3: **Employer** - focused resources and events that will help their organisations transition and grow remotely.

Every week we host a Virtual Coffee for our community members to connect with each other & let us know what their needs are as a remote worker.

Ireland has a thriving community of remote workers and we are proud to support them as well as the local changemakers who volunteer and lead their local chapters.

Getting involved with a Grow Remote Local chapter is a great way for individuals & communities to:

- 1 – Connect with others socially 🤝
- 2 – Create employment locally 💻
- 3 – Repopulate local areas 🏠



# Community Resources



To meet the needs of the remote worker community and eco-system in Ireland, we are dedicated to building an open source set of resources and empowering individuals, employers, and local communities.

Here are some of the mission-led resources that we have available across Ireland:

1: Fully-funded [Training](#) courses that are run in partnership with the LOTEBA and available nationwide:

- [Remote Work Ready](#)
- [Leading Remote Teams](#)

2: Dedicated [Employer Resources](#) to help business leaders and teams transition and thrive remotely, including The Remote Playbook for SME's, The Remote & Hybrid Maturity Model and a Remote / Hybrid Policy Template.

We also have an "[Employer Partners Programme](#)" and the "[Remote Alliance](#)" that provides a platform for pioneering employers to play their part in building a sustainable remote-work ecosystem in Ireland and to thrive within it.

3: A [Career Resources](#) portal that consolidates hundreds of remote employers, dedicated remote jobs boards (including the Grow Remote Jobs Board) and on-demand events such as Job Clubs with leading remote employers.

We also invite you to connect with Ireland's first remote [Recruiter](#) (Aisling Tighe) who is dedicated to helping companies hire remote talent and connecting remote talent with remote employers.

4: A national network of [Grow Remote Local](#) communities that are empowered and supported to connect remote workers socially and drive change at a local level - all community [Events](#) can be found on our public calendar.

5: Access to a global and local community of remote workers and resources through [Grow Remote Online](#).

# Methodology

Thanks to the support of [ESRI Ireland](#), we have been able to build this map and gather additional information through the [Survey123](#) platform.

The purpose of the survey is to map remote employees and employers, and to better understand the current state of remote employment in Ireland and beyond.

By dropping a pin on the Grow Remote Community Map, each contributor is helping our mission of making remote employment more visible and accessible to others.

**There are just 10 required questions so each contribution should take a few minutes only. View the full survey [here](#).**

Any extra information that is provided through the survey's optional questions, on things such as local impact and resources, provides us with data that we are committed to taking action on and empowering individuals, employers, and local communities.

Only the location and employer's name will be made publicly visible on the community map. Beyond that no non-aggregated data from any other sections will be shared publicly or with any third parties. Ever!

As an organisation we focus our efforts on making full-time employment more visible and accessible. In this project, we are not mapping self-employed or freelance remote workers.

These type of remote workers can still contribute to the mission and access all of our community resources by joining Grow Remote Online or by getting involved with a local community-led events - everyone is welcome.

If contributors to the map require their data to be removed or updated, they can contact us by email: [community@growremote.ie](mailto:community@growremote.ie)

**[How to share the Map of Remote & invite others to contribute:](#)**

1: Map of Remote landing page  
<https://bit.ly/growremotemap>

2: Direct link to survey  
<https://bit.ly/grmapsurvey>

3: Support to map your remote teams  
[community@growremote.ie](mailto:community@growremote.ie)

# Summary

We built this map to understand where and how remote employment is having an impact at a local level; to see what happens when decent employment is advertised without location.

Each individual contribution is helping us make remote employment more visible and accessible to others - thank you to everyone who has contributed so far.

We are also committed to taking action that will support the needs of individuals, employers within the remote ecosystem in Ireland, and to drive positive social, economic, and environmental change at a local community level based on the data and information shared.

It is also encouraging to see the number and diversity of remote employers that are supporting the remote ecosystem in Ireland - but there is still plenty of work to do!

Can you help us reach more of the remote workers with an invite to contribute & get involved with the community as a remote work advocate and a changemaker?

How can you get involved & support?

## Remote Workers & Remote Work Advocates:

Contribute to the map and share the map with x3 other remote workers you know. Be proud of the local impact that you are having as a remote worker

## Remote Employers & Remote Team Leaders

Share an invite to contribute to the map within your remote team and be proud of the local impact that you are having as an employer

Link for sharing: <https://bit.ly/growremotemap>

# THANK YOU!

